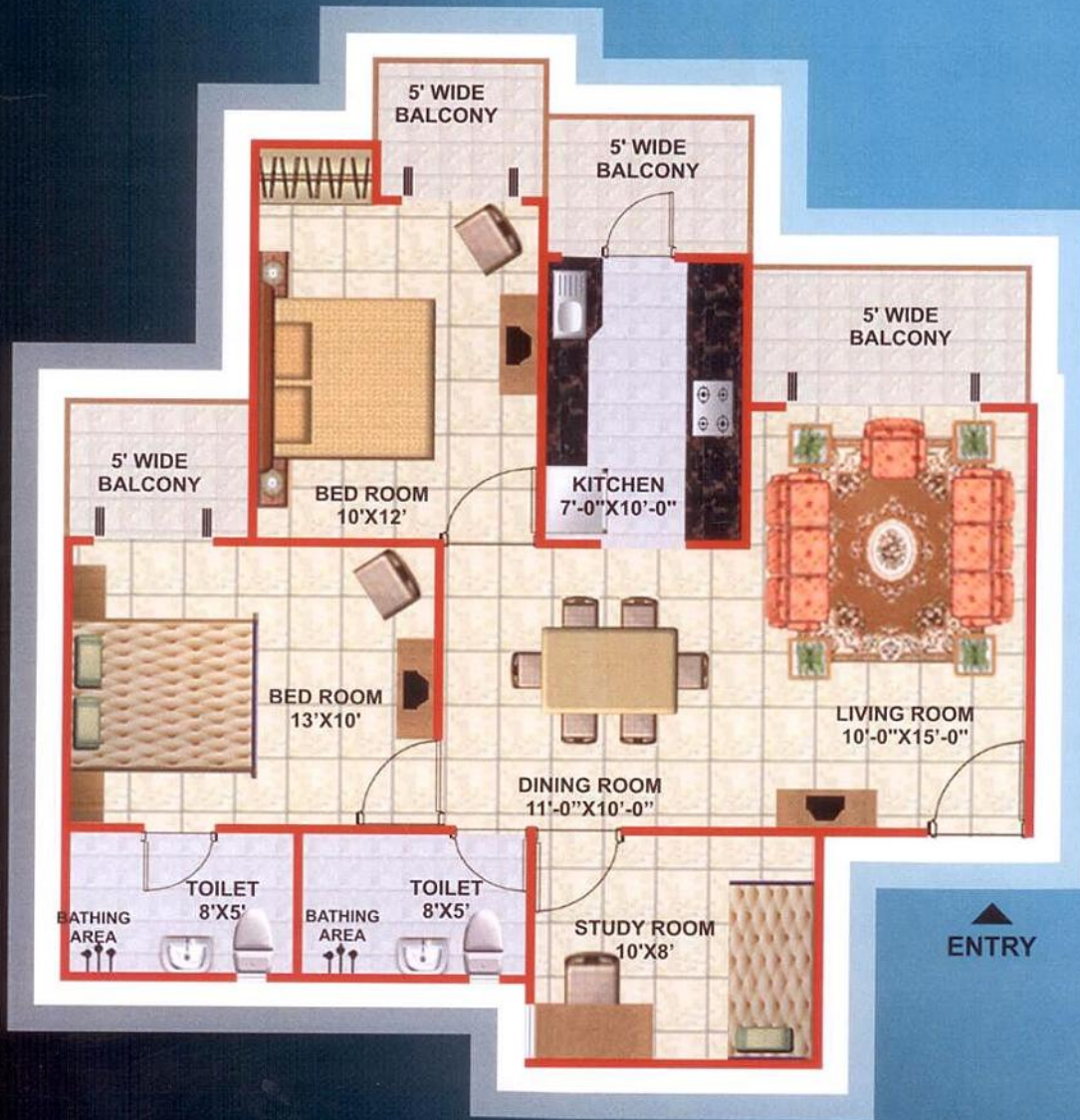


**MIG-1** | Super Area-1080 sq. ft. (Approx.)  
 Built-up Area-865 sq. ft. (Approx.)

- 2 Bedroom
- Living Room
- Dining Room
- Kitchen
- 2 Toilets
- Balconies



*All above features & layouts are tentative and are subject to change without any prior notice. These are purely conceptual & constitute no legal offerings. Balconies are subject to change as per elevation drawings.  
 1 Sq. Mtr. = 10.764 Sq. Ft.*



**HIG-1** | Super Area-1225 sq. ft. (Approx.)  
 Built-up Area-980 sq. ft. (Approx.)

- 2 Bedroom
- Living Room
- 1 Study Room
- Dining Room
- Kitchen
- 2 Toilets
- Balconies

